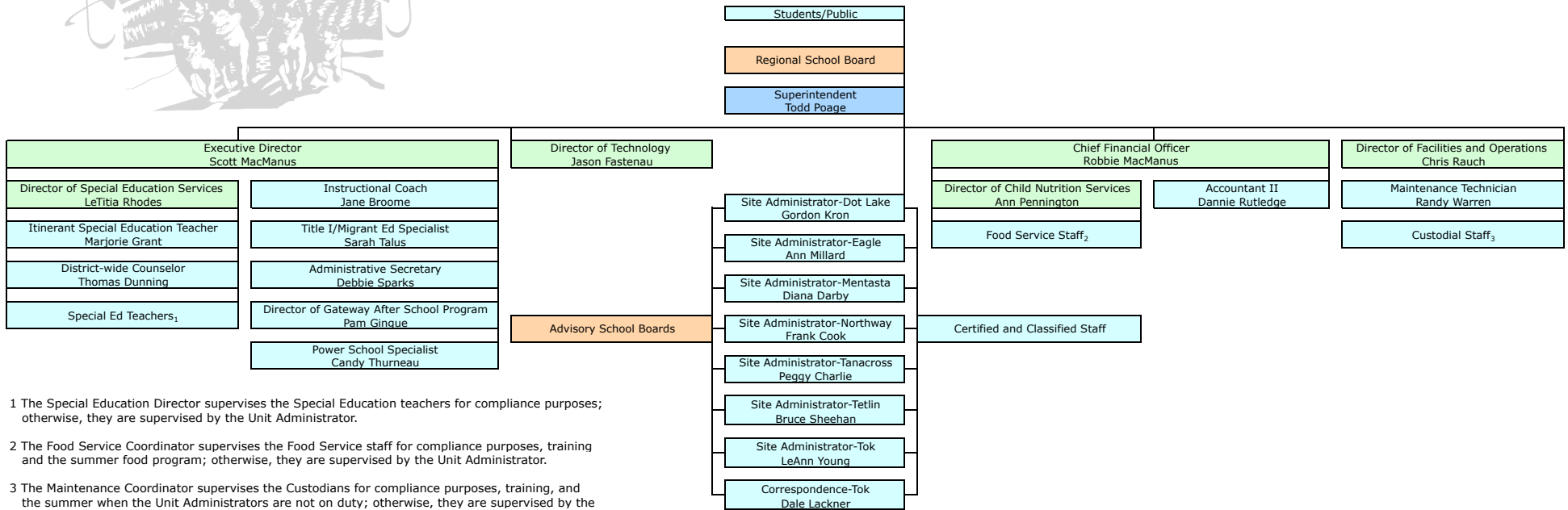




# Alaska Gateway School District

## Organizational Flowchart



- 1 The Special Education Director supervises the Special Education teachers for compliance purposes; otherwise, they are supervised by the Unit Administrator.
- 2 The Food Service Coordinator supervises the Food Service staff for compliance purposes, training and the summer food program; otherwise, they are supervised by the Unit Administrator.
- 3 The Maintenance Coordinator supervises the Custodians for compliance purposes, training, and the summer when the Unit Administrators are not on duty; otherwise, they are supervised by the Unit Administrator.
- 4 Any sites on School Improvement Plans, level two or higher, are under the direct supervision of the Executive Director.
- 5 Light green shaded boxes supervise all positions placed below that level.

Directory	Email Address	Work Phone	Cell Phone	Fax	Mailing Address
Ann Millard	<a href="mailto:amillard@agsd.us">amillard@agsd.us</a>	(907) 547-2210		(907) 547-2302	Eagle School PO Box 168 Eagle, AK 99738
Ann Pennington	<a href="mailto:apennington@agsd.us">apennington@agsd.us</a>	(907) 883-5151 Ext. 119	Cell: 505-0007	(907) 883-5154	Alaska Gateway SD PO Box 226 Tok, AK 99780
Bruce Sheehan	<a href="mailto:bsheehan@agsd.us">bsheehan@agsd.us</a>	(907) 324-2104		(907) 324-2120	Tetlin School PO Box 277 Tok, AK 99780
Candy Thurneau	<a href="mailto:cthurneau@agsd.us">cthurneau@agsd.us</a>	(907) 883-5151 Ext. 103		(907) 883-5154	Alaska Gateway SD PO Box 226 Tok, AK 99780
Chris Rauch	<a href="mailto:crauch@agsd.us">crauch@agsd.us</a>	(907) 883-5151 Ext. 112	Cell: 505-0008	(907) 883-5267	Alaska Gateway SD PO Box 226 Tok, AK 99780
Dale Lackner	<a href="mailto:dlackner@agsd.us">dlackner@agsd.us</a>	(907) 883-2591		(907) 883-5777	Correspondence Study PO Box 454 Tok, AK 99780
Dannie Rutledge	<a href="mailto:drutledge@agsd.us">drutledge@agsd.us</a>	(907) 883-5151 Ext. 105		(907) 883-5154	Alaska Gateway SD PO Box 226 Tok, AK 99780
Debbie Sparks	<a href="mailto:dsparks@agsd.us">dsparks@agsd.us</a>	(907) 883-5151 Ext. 101		(907) 883-5154	Alaska Gateway SD PO Box 226 Tok, AK 99780
Diana Darby	<a href="mailto:ddarby@agsd.us">ddarby@agsd.us</a>	(907) 291-2317		(907) 291-2327	Mentasta School PO Box 6039 Mentasta, AK 99780
Frank Cook	<a href="mailto:fcCook@agsd.us">fcCook@agsd.us</a>	(907) 778-2287		(907) 778-2221	Northway School PO Box 519 Northway, AK 99764
Gordon Kron	<a href="mailto:gkron@agsd.us">gkron@agsd.us</a>	(907) 882-2663		(907) 882-2112	Dot Lake School PO Box 2280 Dot Lake, AK 99737
Jane Broome	<a href="mailto:jbroome@agsd.us">jbroome@agsd.us</a>	(907) 883-5151 Ext. 116		(907) 883-5154	Alaska Gateway SD PO Box 226 Tok, AK 99780
Jason Fastenau	<a href="mailto:jfastenau@agsd.us">jfastenau@agsd.us</a>	(907) 883-4437	Cell: 505-0005	(907) 883-5165	Tok School PO Box 249 Tok, AK 99780
LeAnn Young	<a href="mailto:lyoung@agsd.us">lyoung@agsd.us</a>	(907) 883-5161	Cell: 505-0323	(907) 883-5165	Tok School PO Box 249 Tok, AK 99780
LeTitia Rhodes	<a href="mailto:lrhodes@agsd.us">lrhodes@agsd.us</a>	(907) 883-5161		(907) 883-4356	Alaska Gateway SD PO Box 226 Tok, AK 99780
Marjorie Grant	<a href="mailto:mgrant@agsd.us">mgrant@agsd.us</a>	(907) 883-5806		(907) 883-5154	Alaska Gateway SD PO Box 226 Tok, AK 99780
Pam Ginque	<a href="mailto:pgingue@agsd.us">pgingue@agsd.us</a>	(907) 883-5151 Ext. 102	Cell: 505-0010	(907) 883-5154	Alaska Gateway SD PO Box 226 Tok, AK 99780
Peg Charlie	<a href="mailto:pcharlie@agsd.us">pcharlie@agsd.us</a>	(907) 883-4391		(907) 883-4391	Tanacross School PO Box 76030 Tanacross, AK 99776
Randy Warren	<a href="mailto:rwarren@agsd.us">rwarren@agsd.us</a>	(907) 883-5151 Ext. 114	Cell: 505-0009	(907) 883-5267	Alaska Gateway SD PO Box 226 Tok, AK 99780
Robbie MacManus	<a href="mailto:rmacmanus@agsd.us">rmacmanus@agsd.us</a>	(907) 883-5151 Ext. 109		(907) 883-5154	Alaska Gateway SD PO Box 226 Tok, AK 99780
Sara Talus	<a href="mailto:stalus@agsd.us">stalus@agsd.us</a>	(907) 883-5151 Ext. 113		(907) 883-5155	Alaska Gateway SD PO Box 226 Tok, AK 99781
Scott MacManus	<a href="mailto:smacmanus@agsd.us">smacmanus@agsd.us</a>	(907) 883-5151 Ext. 115	Cell: 505-0004	(907) 883-5154	Alaska Gateway SD PO Box 226 Tok, AK 99780
Teresa Paulsen	<a href="mailto:tpaulsen@agsd.us">tpaulsen@agsd.us</a>	(907) 883-5161		(907) 883-5165	Tok School PO Box 249 Tok, AK 99780
Todd Poage	<a href="mailto:tpoage@agsd.us">tpoage@agsd.us</a>	(907) 883-5151 Ext. 101	Cell: 590-0030	(907) 883-4356	Alaska Gateway SD PO Box 226 Tok, AK 99780